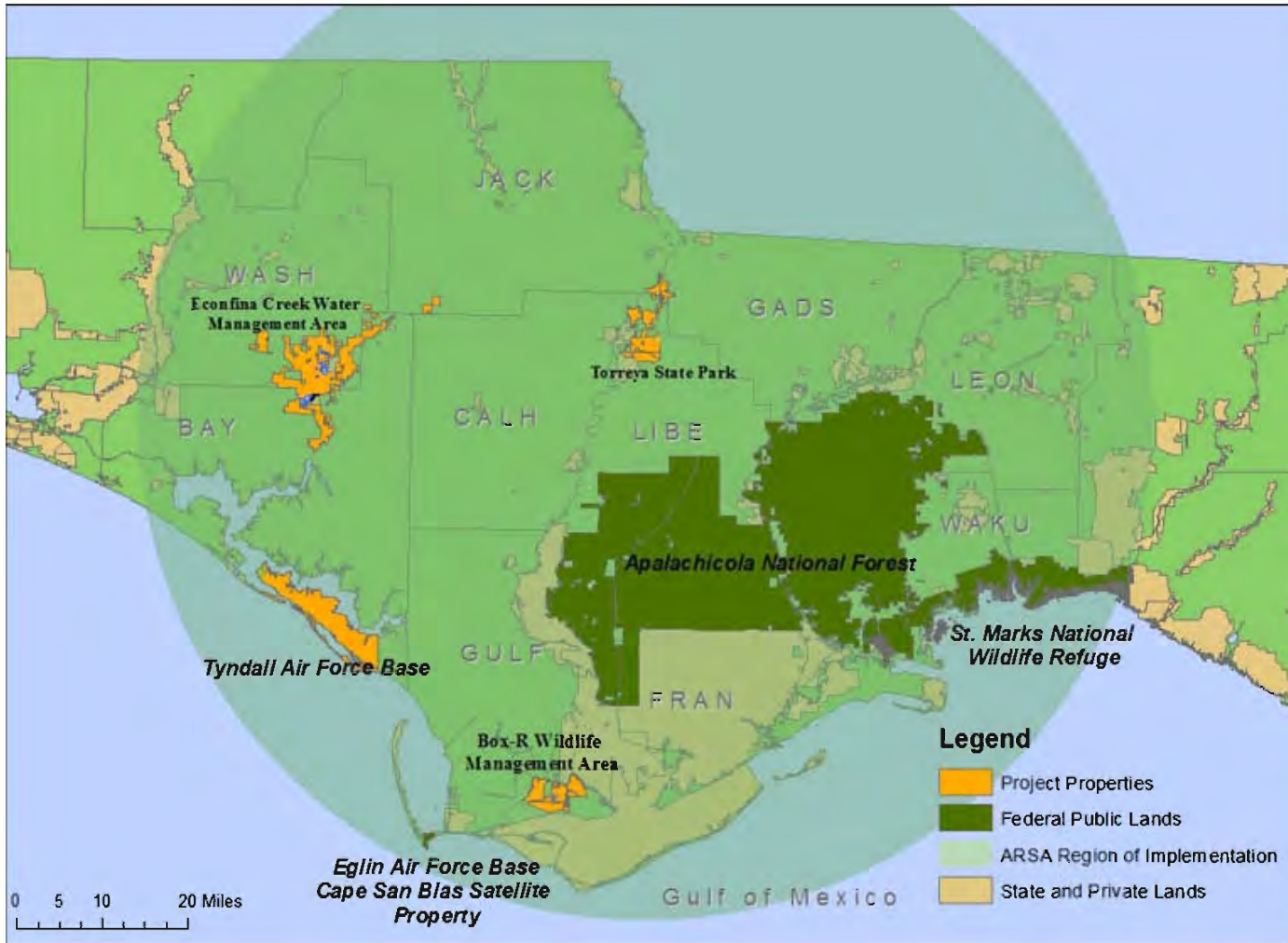


Apalachicola

Regional Stewardship Alliance CISMA



Apalachicola River Region



Invasive Species Snapshot

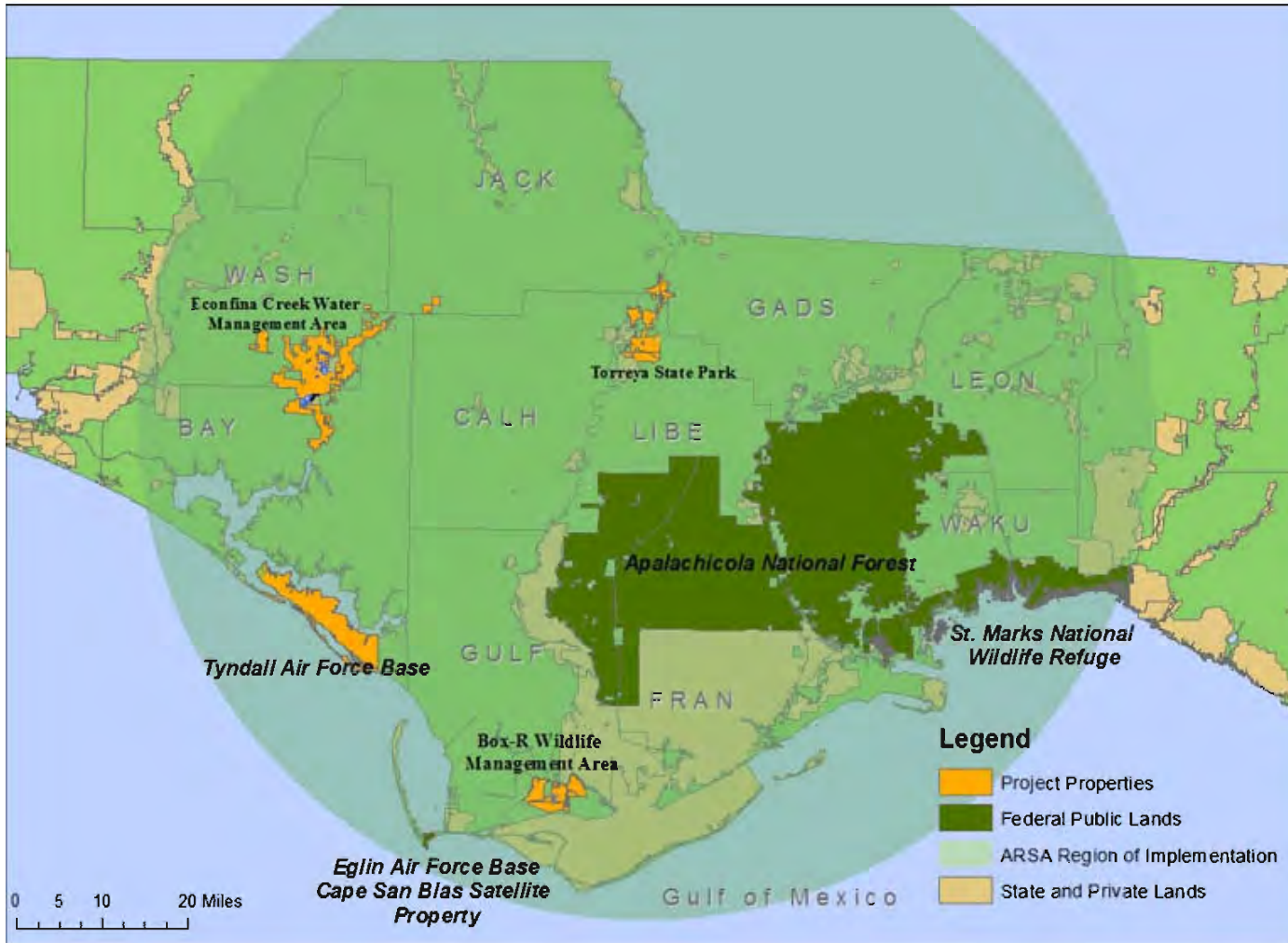
- 2013 Control Species
 - Cogongrass
 - Japanese Climbing fern
 - Chinese Tallow
 - Silktree
 - Camphor
 - Privets
 - Air Potato

Invasive Species Snapshot

- 2013 ED/RR Species

- natal grass
- itch grass
- guinea grass
- Japanese Stiltgrass
- West Indian Marsh Grass
- Skunkvine
- multi-flora Rose
- paper mulberry
- Brazilian pepper
- Eurasian water milfoil
- Marianna maiden fern

Apalachicola River Region



2013 ARSA Accomplishments

	acres	hours
Rx Fire (growing season in bold)		
Rx Fire total	14550	
Equipment/resource Share	148	
Technical Planning Assistance	54112	35
Direct Land Management	123	94
training		328
total	68,933	457

Power of Partnership

- Ideas
 - Resources
 - Coordination
 - Complaining/Consoling
 - Joint funding
 - Local Implementation of regional plans
-
- **The Scope and Scale Don't Matter**

Challenge-stewardship

- Conservation, Restoration and Management operations
 - \$\$ intensive
 - seasonal
 - Requires adaptive approaches

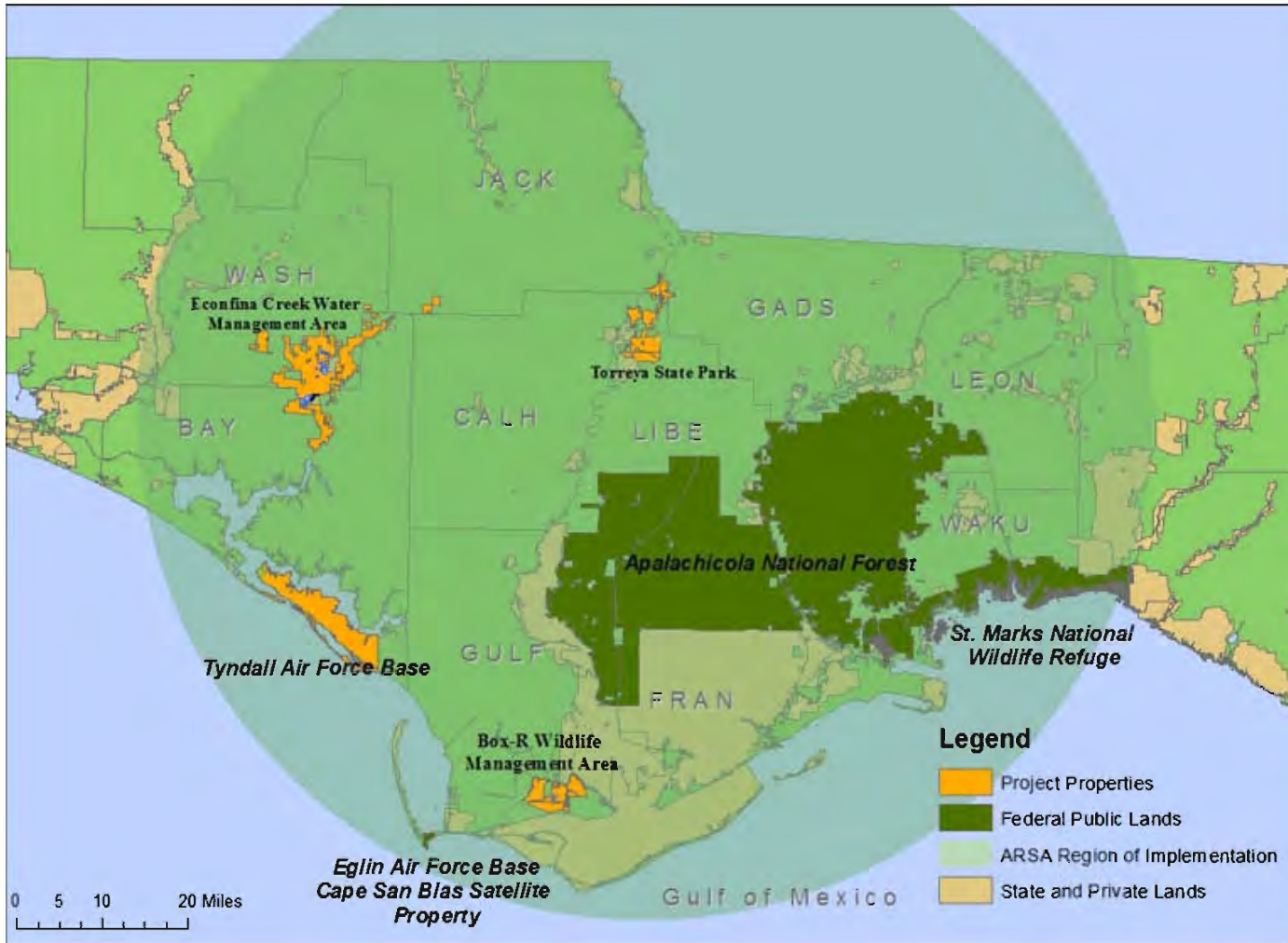


Challenge-invasive species

- Fence line issues-require coordination
- \$\$ intensive
- Technology changes



Apalachicola River Region



ARSA-CISMA in Practice



Power of Partnership

- Ideas: **model for other prioritizations**
- Resources: **experience**
- Coordination: **different agencies**
- Complaining/Consoling: **typical invasives angst**
- Joint funding: **process cost nothing**
- Local Implementation of regional plans: **list used by IPMS**



Outlook for both partnerships

- “Local Implementation Team” for America’s Longleaf Plan/FISP
- “SGA”-wide conservation planning
- Increasing participation by field staff and agencies
- **Ample and Stable funding for managing current and future lands**



Suggestions/Observations

- Membership-personality is important
- Leadership-funded coordination greases all wheels
- Don't focus on differences...but scale may depend on common ground
- Find balance within:
 - over/under communication
 - Facetime/efficiency
 - Meetings/fieldtrips/workdays...they all do different things
- Patience...ARSA MOU was signed in 2010 (7 year evolution)
 - A forced alliance is a paper tiger...relationships take time and effort.

Drexel Revell Project Site A

