

Exotic Invasive Plant Control in North Carolina State Parks:

(Piedmont Region)



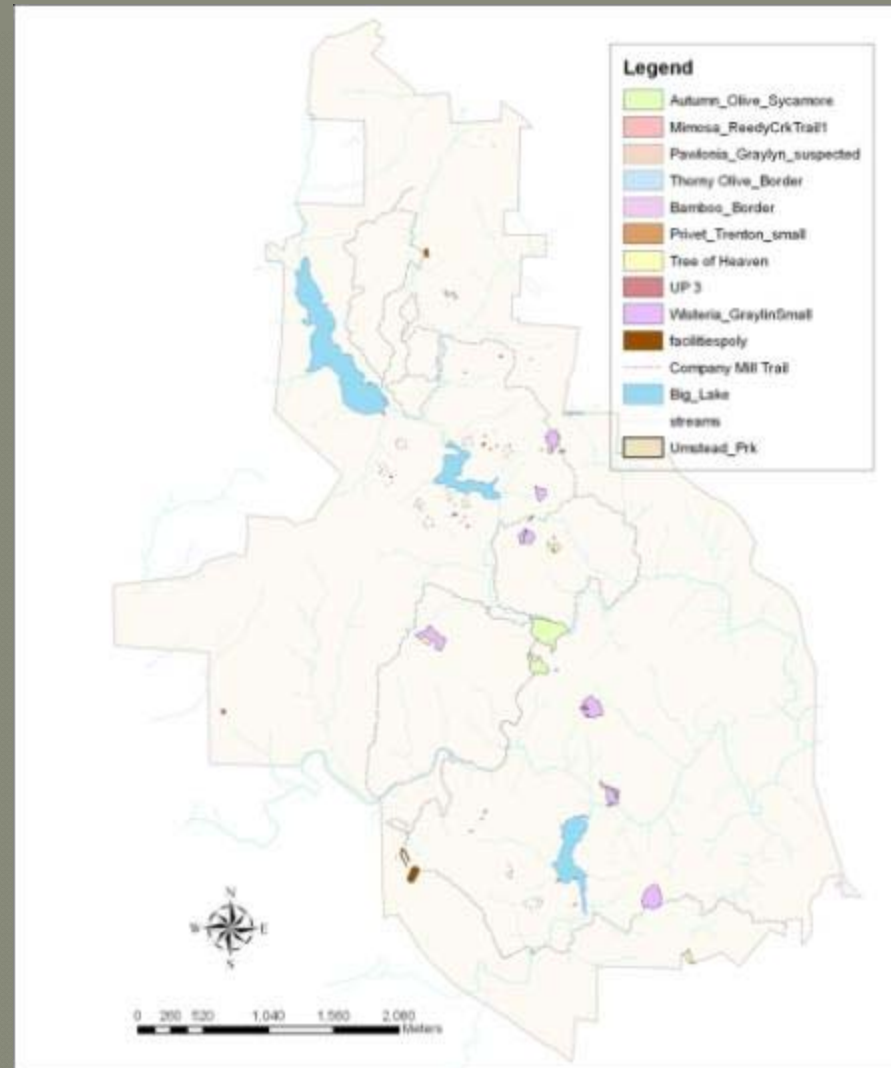


Philosophy

- NC State Parks contain some of the highest quality natural communities in the state
- As park resource managers, it is our mission to protect our native plants, animals, and biological communities by actively working to prevent the introduction and spread of invasive exotic plant species within our borders

Inventory and Mapping

- GPS/GIS
- Internships funded by Umstead Coalition
- Partners
 - NC Aquatic Weed Program
 - NC Sandhills WMA
 - Duke Citizen Science Program
 - others



Prioritization and Planning



- Give priority to infestations near rare species habitats/in high quality natural communities
- Get the small patches first
- Get the easy ones first
- Have a written control plan for large infestations

Preferred Control Methods

- Cut stump treatments for woody species
 - 25-50% glyphosate or triclopyr, + surfactant and dye
- May be followed by foliar treatment for resprouting material
 - 2% glyphosate or triclopyr, + surfactant and dye



Preferred Methods Cont.



- We also use these techniques:
 - Girdling
 - Frill Cuts
 - Basal Bark
 - Rx Fire (followed by herbicide application)

Volunteers Get It Done!

- Park Friends groups
- Corporate groups
- Americorps NCCC
- Workshop participants



Americorps NCCC

- 5 week project
- Team of ~8, ages 18-24
- We provided housing (campsites or cabins), training, herbicides, and PPE
- Americorps provided team members with tools, food allowance, health insurance, liability coverage, and transportation
- Team leader = minimal supervision after training



Americorps NCCC (cont.)



- Carolina Beach SP
 - William B. Umstead SP
 - Jordan Lake SRA
 - Morrow Mountain SRA
 - Pilot Mountain SRA
- Chinese privet, Wisteria, Golden Bamboo, Autumn Olive, Tree-of-Heaven, trailwork, fire effects veg plots, harvested native grass seed

Corporate Groups



- Community service hours
- Attended volunteer forum to recruit
- Netapp (RTP) put in 560 hrs with state parks this year, and counting...
- American Tower – 160 hrs
- Triangle Impact

Workshops

- Taught in all 3 regions, for park staff and for outside participants (provide EE credits and pesticide credits)
- Focus on ID of common exotic invasives, impacts on biodiversity, control methods
- Spend second half of day working on controlling an infestation in the park (free labor!)



THE END

