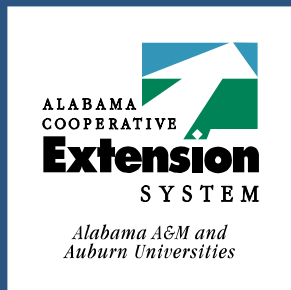


Chinese Privet Biology and Management

Stephen F. Enloe

Department of Crop, Soil, and Environmental Sciences
Auburn University





UGA2307



UGA2307079



UGA2307077

Chinese privet
Ligustrum sinense

“Between the hedges” refers to Chinese Privat!











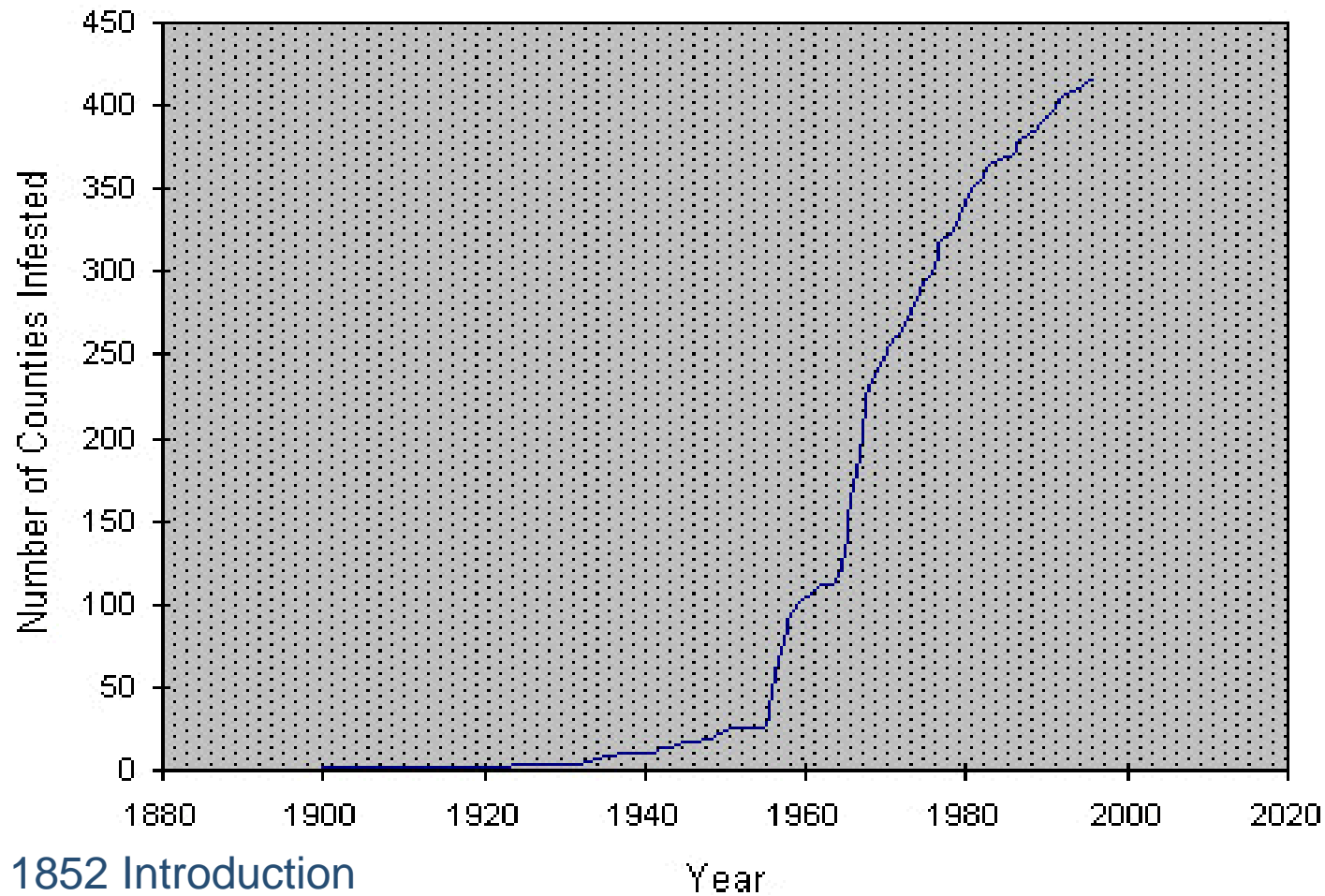
Hanula and Horn (2009) found a 10-fold increase in bee abundance and a 4-fold increase in bee richness when privet was removed.



Removing Chinese privet from riparian forests had a beneficial effect on insect pollinator communities five years after removal (Hudson et. al 2014)

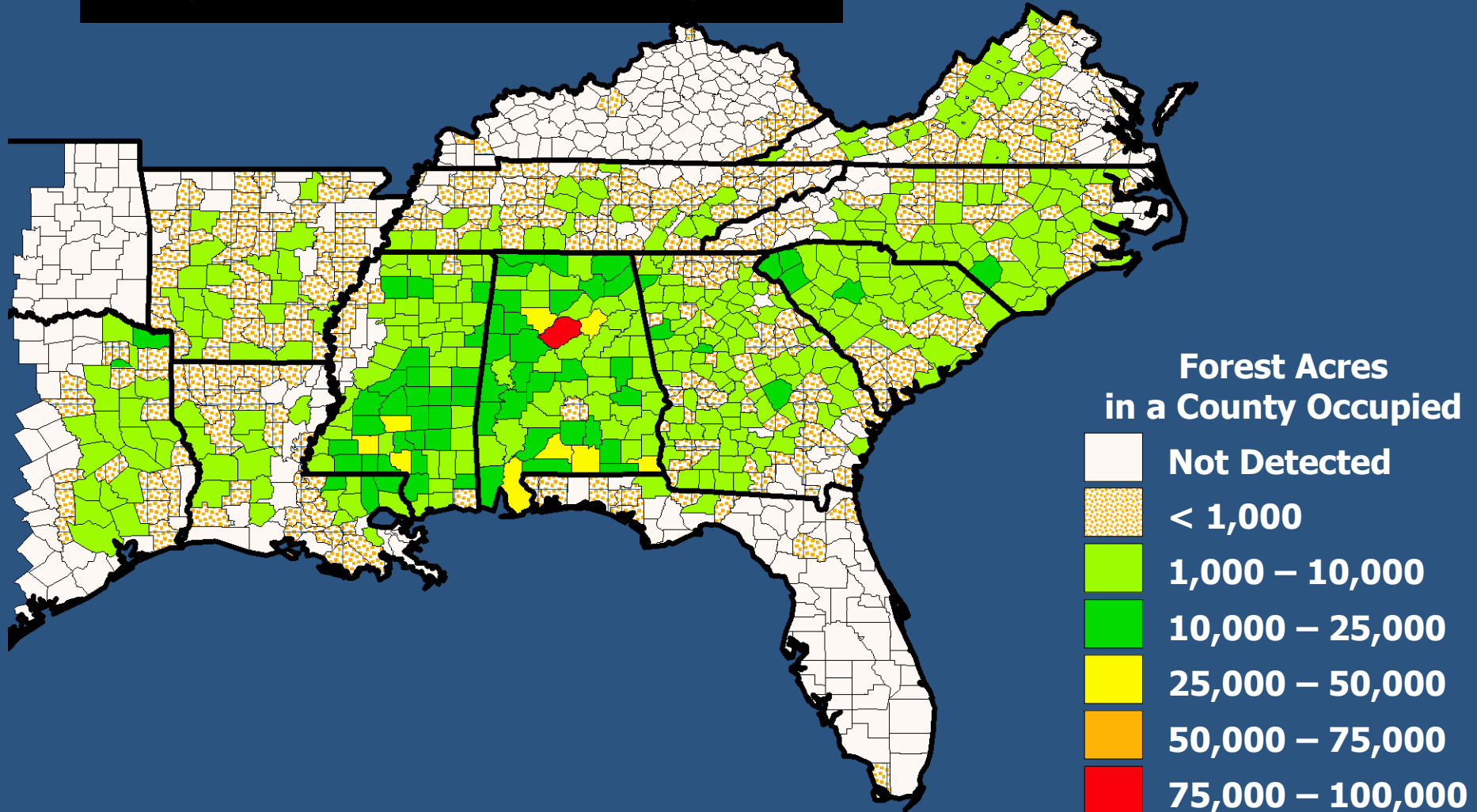


Spread of Chinese Privet (*Ligustrum sinense*)



Chinese and European Privets

Ligustrum sinense and *L. vulgare*



USDA Forest Service
SRS FIA database March
2008 Miller and Chambliss,
Auburn













Management options



2013/09/30



<http://pacolet.org/town-of-tryon-project/>



2013/09/30

<http://pacolet.org/town-of-tryon-project/>

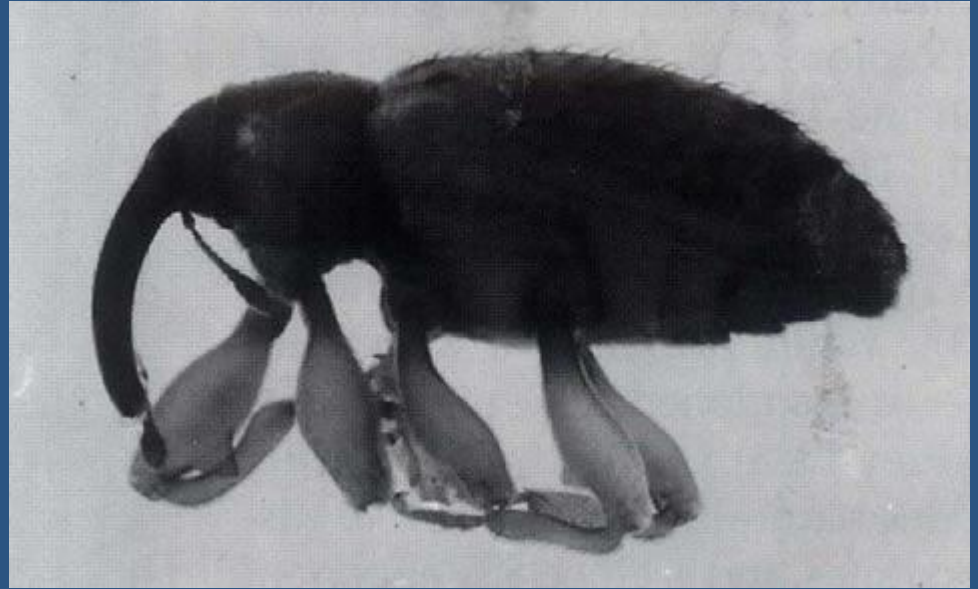






Privet and Biocontrol?

Ochyromera ligustri



Leptoypha hospita

Mechanical whole plant removal



Mulching







Sprouting following
mulching





Backpack and hand gun foliar applications

Active Ingredient	Examples	Active ingredient in product	Product rate
Glyphosate	Accord Concentrate	5.4 lb/gal	1 gal/A 3-5% v/v
Imazapyr	Arsenal AC	4 lb/gal	2-3 pt/A 1.25-1.8%v/v

Directed – Backpack and hand gun foliar applications



100% coverage over top of the terminal bud is critical



Cut Stump - water based mixture

Cut close to the ground and treat immediately!



Treat the entire surface of small stumps



Herbicides for water based cut stump treatments

- Glyphosate
 - Use at least a 41% active ingredient
 - RATE: 25-50% v/v
 - Add NIS @ 0.25% v/v
- Triclopyr amine (Water soluble formulation)
 - Garlon 3A, Generics
 - RATE 25-50% v/v
 - Add NIS @ 0.25% v/v

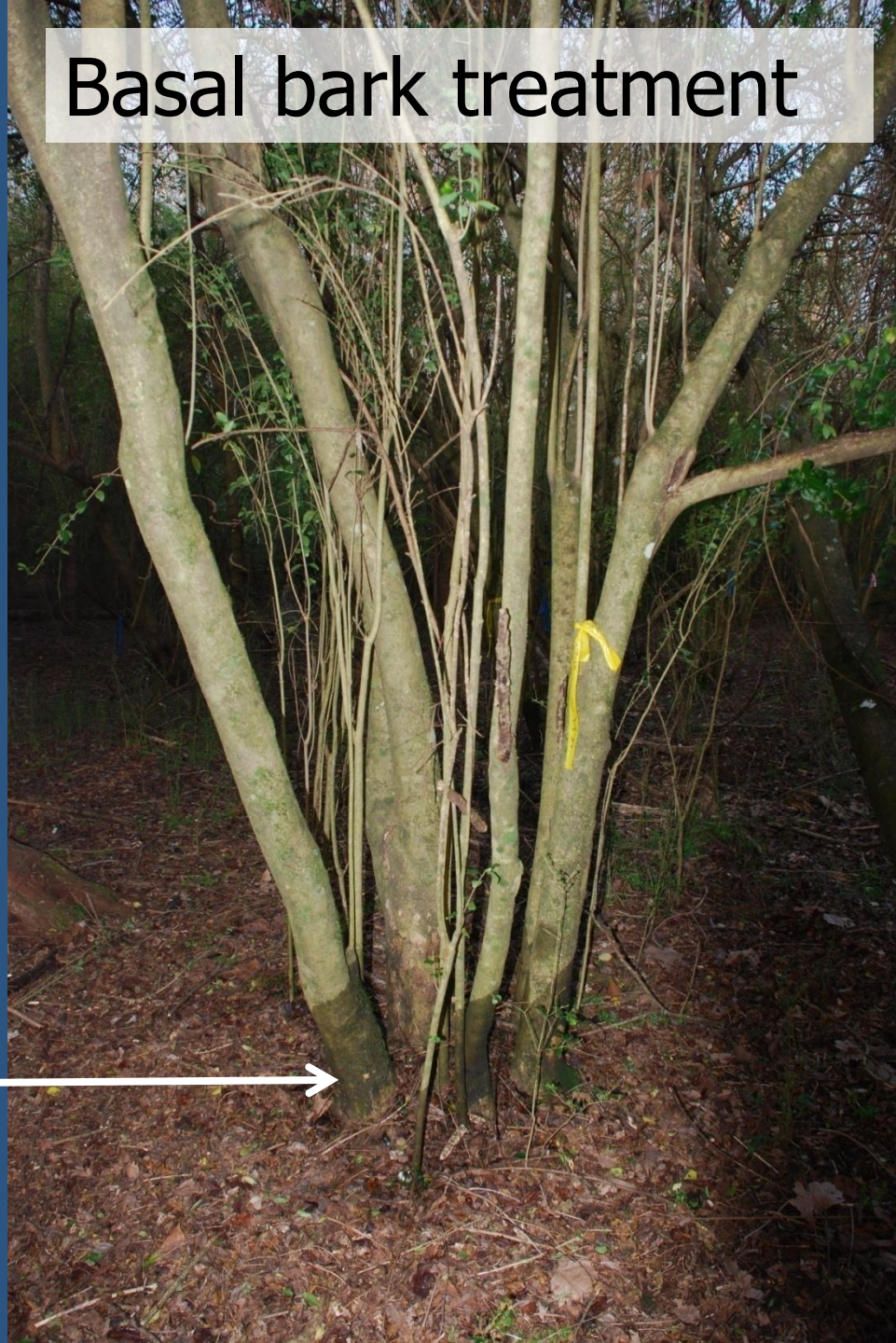
Basal bark treatments

- Treatment of the lower 12-15 inches of each stem
- Use an oil carrier, NOT water
 - Bark oil, mineral oil, or crop oil
 - These are generally “nicer” than diesel fuel
- Use an oil soluble herbicide formulation
- Timing: year round but fall and winter are easier

Basal bark treatment



Basal bark treatment



Treat the lower
12-15 inches
of every stem!

Recommended Basal Treatments

- DO NOT USE glyphosate or triclopyr amine for basal treatment!
- USE triclopyr ester formulation (oil soluble)
 - Garlon 4 or Remedy @ 20% v/v
 - Generics
 - Pathfinder II (Ready to use)

Basal bark treatment is not recommended here!



Hack and squirt treatment



