



**Shawnee**

Resource, Conservation  
& Development



# WHAT COOPERATIVE WEED MANAGEMENT AREAS CAN DO FOR YOU

**Chris Evans**

**IWAP Invasive Species Campaign**

# OUTLINE

- What is a CWMA
- Demonstrate potential of CWMA through case study
  - River to River CWMA
- Look at projects/programs from other successful CWMAS



# WHAT IS A CWMA

- Cooperative Weed Management Area
  - Cooperative Invasive Species Management Area
  - Partnership Regional Invasive Species Management
  - Invasive Plant Partnership
  - Etc...
- Formalized partnership within a defined area that focuses on invasive species



# CWMA BEGINNINGS

- Started in the Western US as an outgrowth of county weed commissions
- Focus of noxious weeds in rangelands





UGA2132056

# REGIONAL MANAGEMENT

- Effective invasive species management should be implemented on the same scale as the infestation
- If invasive species do not recognize boundaries, **but we have to**, they automatically have the upper hand



# CWMAs

- Provide a means to communicate and collaborate efforts across agencies and landowners to address invasive species at a more appropriate scale



# CWMA BENEFITS

- Provides vehicle for collaboration that goes beyond individuals
- Additional funding through collaborative projects
- Reduction over time in their control costs
  - Reduced spread from adjacent lands





# REGIONAL BENEFITS

- Wiser use of limited resources
- Additional funding for invasive species projects
- Enhanced EDRR
- Broader understanding of invasive species' distributions/impacts
- Dissolving of boundaries
- Reduced cost of invasive species control over time
- Enhanced spread prevention





# RIVER TO RIVER

Cooperative Weed Management Area

- Established in 2006
- Formalized Partnership between 12 federal and state agencies, non-profit organizations, and universities
- Project under Shawnee RC&D

## **Focus Areas**

1. Education and awareness
2. Organization and capacity building
3. Coordinated control efforts
4. Research in applied methods



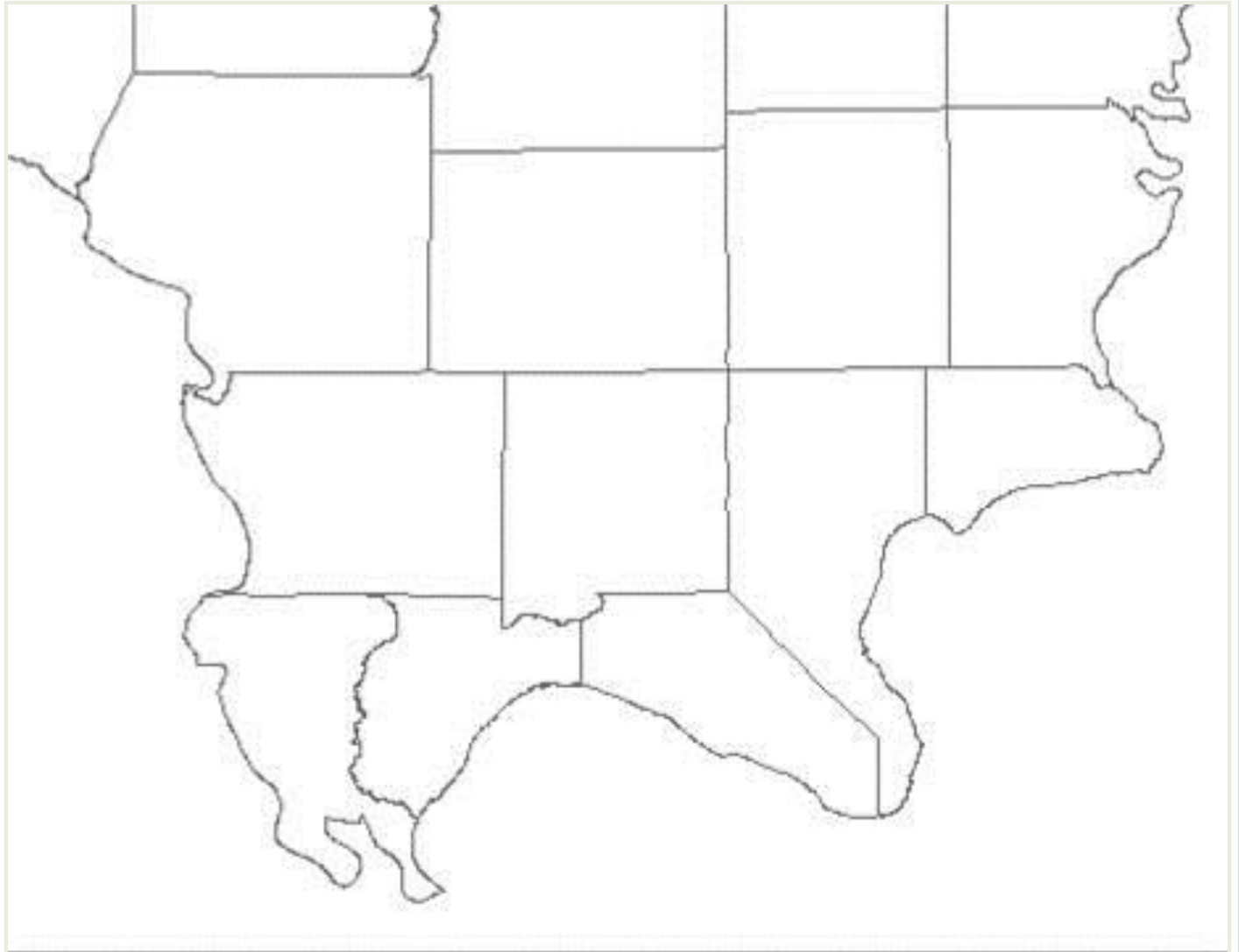
# ESTABLISHMENT OF INVASIVE SPECIES PROGRAMS

- Convergence of important events
  - Collaborative kudzu efforts ramping up in Illinois
  - Monies available for cooperative invasive species work through NFWF
  - Shawnee National Forest started developing invasive species plan
  - IDNR finalized IWAP with an invasive species campaign
  - CWMA workshops being held by Midwest Invasive Plant Network



# 11 SOUTHERNMOST COUNTIES IN ILLINOIS

- Alexander
- Gallatin
- Hardin
- Jackson
- Johnson
- Massac
- Pope
- Pulaski
- Saline
- Williamson
- Union



# ORGANIZATION

- Full time coordinator
  - Grant funded
- Steering Committee
  - Representative from each partner
  - Quarterly meetings
- Memorandum of Understanding
- Use Shawnee RC&D as umbrella group to obtain 501C(3) status
- Grant funded and project-based



# CWMA FUNDING SOURCES

- National Fish and Wildlife Foundation
- National Forest Foundation
- Boat U.S. Foundation
- NRCS – Conservation Innovation Grant
- USFS State & Private Forestry
- USFS Region 9
- State Wildlife Preservation Fund Grants
- State Conservation Grants
- Participatory Agreements and Challenge Cost-shares
- State Wildlife Grants
- Grand Victoria Foundation



# CWMA FUNDING

- Over 1.5 million brought into region for invasive species work since 2006



# CWMA PROJECTS





# Training Sessions

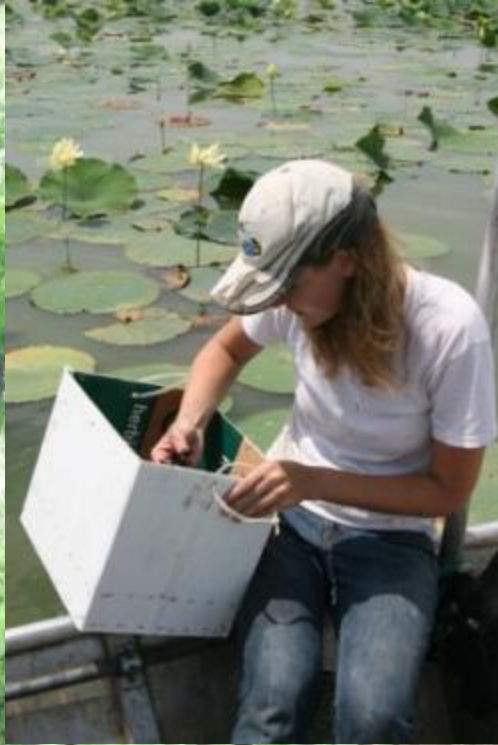


# TRAINING SESSIONS/WORKDAYS

- Over 200 events held
- >5,000 attendees
  - Landowners
  - Agency staff
  - Volunteers
  - Consultants/Contractors
  - Students
- Leads to increase in knowledge, desire, skills, and ability to manage invasive species within the region



# Internship Program



# INTERNSHIP PROGRAM

- 12 Interns (two more this year)
- Conduct research
- Help implement control work
- Map invasive species
  
- Many interns have continued working with invasive species
  - Full-time employment
  - Graduate school



# PROGRAMS

# 2010 Stiltgrass Summit

River to River Cooperative Weed Management Area

*Illinois  
Invasive Species*



*Awareness  
Month*



# INVASIVE SPECIES AWARENESS MONTH

- 4 years and running
- Started with CWMA, spread across the state
- This year over 120 educational events across Illinois



# BOOT BRUSH STATIONS

- 42 boot brushes established at trailheads with CWMA
  - State
  - Federal
  - NGO
- Additional 12 established this year
- Reduce spread but also great teaching/outreach tool



# Multistate Survey Projects





# MULTISTATE PROJECTS

- Working with adjacent states and partnering CWMAs to survey and map regional invasive species problems



# RESULTS SUMMARY

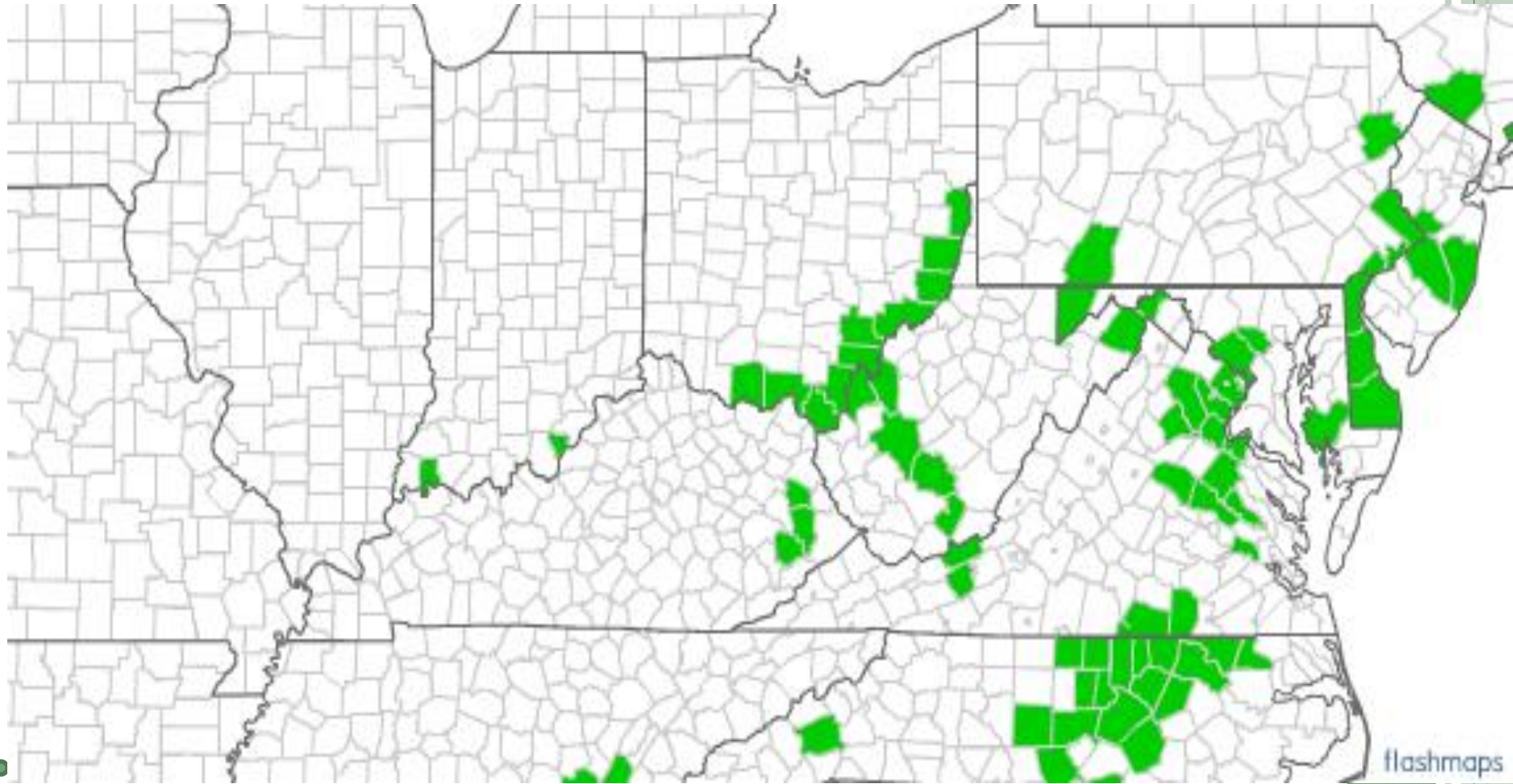
| Invasive species      | # of Infestations | Invasive species      | # of Infestations |
|-----------------------|-------------------|-----------------------|-------------------|
| garlic mustard        | 18                | mile-a-minute weed    | 4                 |
| hydrilla              | 34                | Chinese yam           | 10                |
| purple loosestrife    | 20                | flowering rush        | 1                 |
| Nepalese browntop     | 4                 | reed canarygrass      | 51                |
| parrotfeather         | 1                 | curlyleaf pondweed    | 49                |
| Eurasian watermilfoil | 99                | zebra mussel          | 35                |
| brittleleaf naiad     | 109               | Chinese mystery snail | 26                |
| common reed           | 21                |                       |                   |



# BRITTLE NAIAD



# HYDRILLA RESULTS

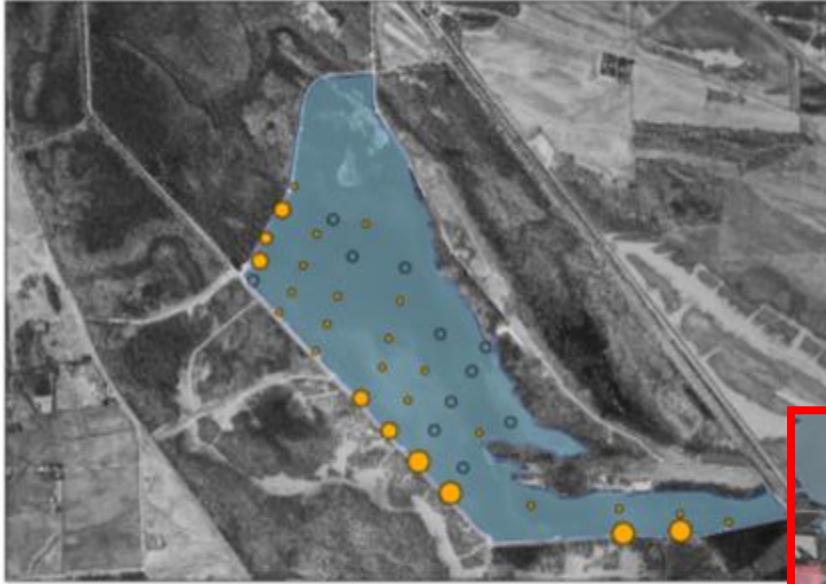


# HYDRILLA RESULTS



# Results from Mermet Lake Turion Survey - Sum

0 0.25 0.5 Miles



Map based on data collected in the spring of 2009 by the Illinois Department of Natural Resources and the River to River Cooperative Weed Management Area



## Illinois WeedWatch Project

This project has been made possible through an Illinois Department of Natural Resources Wildlife Preservation Fund Grant.



# Technology

# WEBSITE



[Home](#) | [Links](#) | [Contact](#)

Google™ Custom Search

[About CWMA](#)

[Projects](#)

[Distribution Maps](#)

[Report Sightings](#)

[Species of Concern](#)

[Educational Resources](#)

[News](#)

[Partners](#)

## Quick Links

[Japanese Stiltgrass Fact Sheet - NEW](#)

[Southern Illinois Invasive Species Strike Team 2010 Annual Report](#)

[Japanese Chaff Flower Species Alert](#)

[ISAM Website](#)

[2010 Stiltgrass Summit](#)

[Invasive Plants of Southern Illinois](#)

[The Weed Eater Newsletter \(pdf\)](#)

[Defending Favorite Places Video](#)

[Illinois Kudzu Eradication Program](#)

[Invasive Species Research](#)

[Southern Illinois Invasive Species Strike Team 2009](#)

[River to River Newsletter](#)



*The Weed Eater*

## What is River to River CWMA?

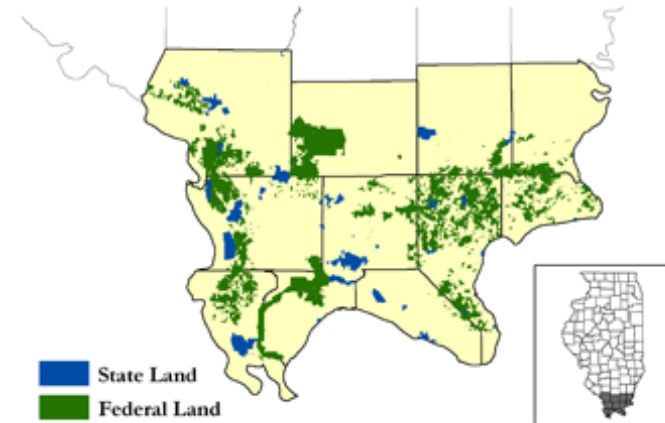
The River to River Cooperative Weed Management Area (CWMA) is a partnership between 12 federal and state agencies, organizations, and universities aimed at coordinating efforts and programs for addressing the threat of invasive plants in Southern Illinois. The CWMA was formally established in 2006 ([view our MOU](#)) and addresses both terrestrial and aquatic invasive plant species through collaborative projects and activities focused in the following areas:

- Education / Public Awareness
- Early Detection and Rapid Response
- Prevention
- Control and Management
- Research

The CWMA is grant funded and projects-based. Our goal is to cooperatively address the short and long-term effects of non-native invasive plants across jurisdictional boundaries within the 11 southern counties of Illinois.

**Thank you for your support!**

**The River to River Cooperative Weed Management Area would**



## Events

Today



Week

Month

Agenda

Friday, March 4

Southern Indiana Cooperative Weed Managem

Tuesday, March 8

Bottomland Ecosystem Restoration 2011 Conf

Wednesday, March 9

Bottomland Ecosystem Restoration 2011 Conf

# Report new invasives and infestations.



[Home](#) | [Links](#) | [Contact](#)

Google™ Custom Search



[About CWMA](#)

[Projects](#)

[Distribution Maps](#)

[Report Sightings](#)

[Species of Concern](#)

[Educational Resources](#)

[News](#)

[Partners](#)

## Report an Invasive Species Occurrence

### New to EDDMapS?

In order to report an invasive species, you will need to register. All information will be for internal use only. If you are already registered to use EDDMapS, you may login using your existing username and password.

[Register Now](#)

### Already Registered?

#### Please Log In:

User Name:

Password:

[Login](#)



[www.rtrcwma.org/report/](http://www.rtrcwma.org/report/)



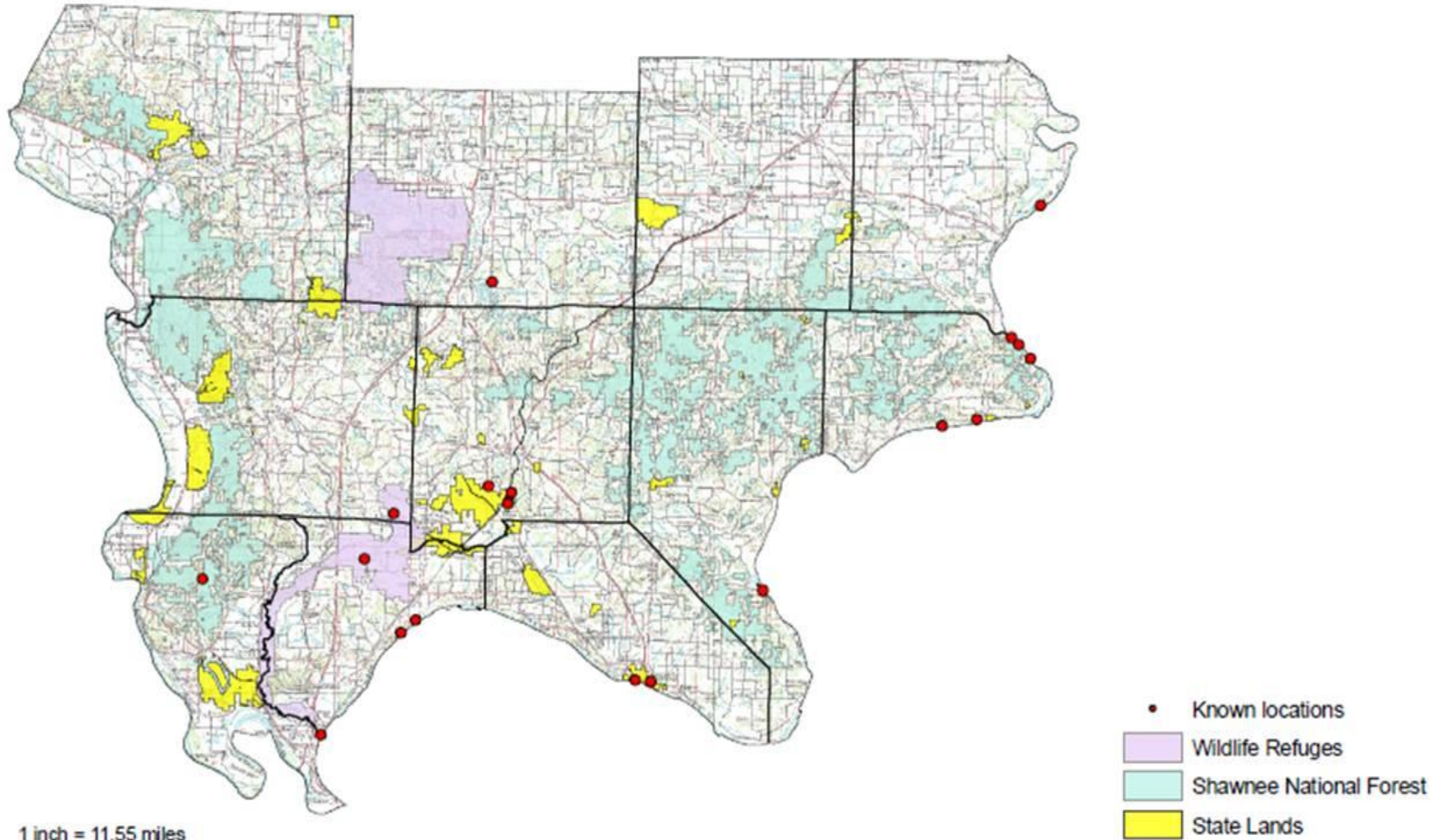
# BUSH HONEYSUCKLE

- Survey and mapping
- Prioritization of control
- Management



Aerial survey of bush honeysuckle

## Current known locations of Japanese chaff flower, *Achyranthes japonica*, in Illinois August 2012



# PUBLICATIONS

## Japanese Chaff Flower - *Achyranthes japonica* (Miq.) Nakai



A new exotic species has been found in southern Illinois. Japanese chaff flower, *Achyranthes japonica* (Amaranthaceae), is a perennial herbaceous plant that is native to Eastern Asia. It was first found in the United States in eastern Kentucky in the early 1980s and has quickly spread along the Ohio River and tributaries. It is currently found in seven states (Alabama, Illinois, Indiana, Kentucky, Ohio, and Tennessee). In Illinois, it was first found in 2008 in Massac County, but has since been found in Pulaski and Williamson counties.

Japanese chaff flower is easy to identify. Plants can be up to 2 meters tall (particularly in sunny areas). The leaves are opposite, simple, and entire along the margins. The flowers occur on erect spikes at the end of the stems and upper branches. Flowers are small, lack petals, and occur in a tight cluster at the end of the spike. The flowers diverge at nearly a right angle giving the flowers somewhat of a bottle-brush fruit are formed, the spikes elongate greatly against the spike. Each fruit has a pair of the fruit in attaching to clothes or fur.



US Distribution

Japanese chaff flower seems to grow best in areas with partial sun and moist soils, but can also grow in heavily shaded and drier environments. Dense



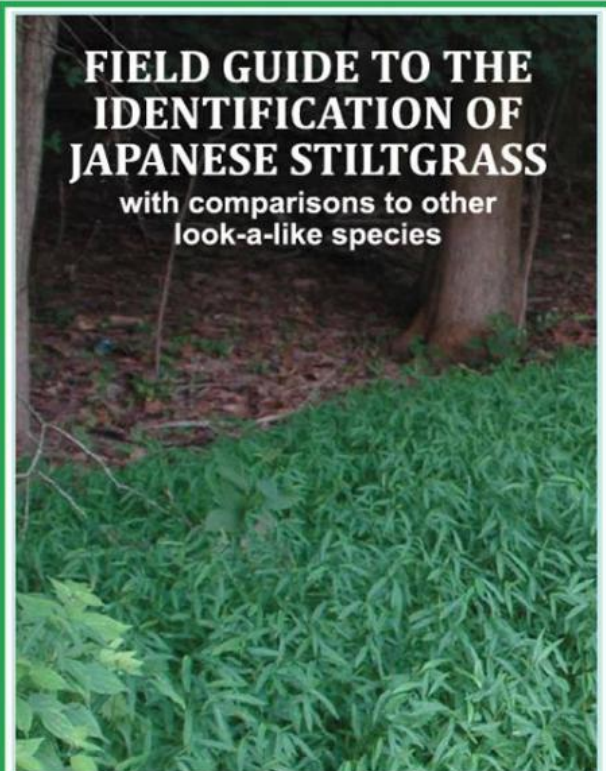
Help Protect Southern Illinois' Lakes and Rivers



Cooperative Weed Management Area, September 2010 • Illinois Department of Agriculture • Cypress Creek National Wildlife Refuge • University of Illinois - Extension • Southern Illinois University - Carbondale • Southern Illinois University - Edwardsville • Southern Illinois University - Springfield • Southern Illinois University - Macomb • Southern Illinois University - Mattoon • Southern Illinois University - Olney • Southern Illinois University - Shawnee • Southern Illinois University - Tuscarora • Southern Illinois University - Unionville • Southern Illinois University - Vandalia • Southern Illinois University - Yorkville



Stop the Spread of Aquatic Invasive Species



RIVER TO RIVER Cooperative Weed Management Area logo, Alabama Cooperative Extension System logo, and a colorful cross logo.

River to River Cooperative Weed Management Area logo at the top.

# Invasive Plants of Southern Illinois

by Tiffany Osborne and Brad Steffen

RIVER TO RIVER Cooperative Weed Management Area logo at the bottom.

# WORKING WITH THE PUBLIC



# WORKING WITH THE PUBLIC

- Landowner visits
- Species identification assistance
- Technical assistance
  - Management plan development
- Financial assistance
  - Cost-share program
- Equipment loan program
- Community outreach/education



# LAND OWNER ASSISTANCE

- Cost-share
- Technical support





Control!

# STRIKE TEAM





# STRIKE TEAM – ACCOMPLISHMENTS

- 2012 – 25 Species at 30 sites
- Acreage
  - 2009 – 1,172 acres
  - 2010 – 2,477 acres
  - 2011 – 1,660 acres
  - 2012 – 3,704 acres
- EDRR Species
  - Burning bush, garlic mustard, privet, kudzu, , chaff flower, Amur corktree, Bradford pear, princess tree, rose of Sharon, Sericea lespedeza, Chinese yam, tree-of-heaven, Oriental bittersweet, Japanese stiltgrass, Japanese knotweed, Common teasel

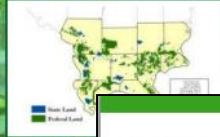
# Southern Illinois Invasive Species Strike Team

2009 Annual Report



## Southern Illinois Invasive Species Strike Team

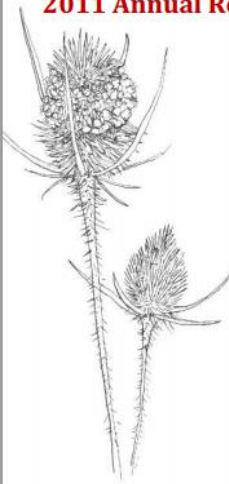
2010 Annual Report



# Detailed Reporting

## Southern Illinois Invasive Species Strike Team

2011 Annual Report



Southern Illinois Invasive  
Species Strike Team

A science-based  
collaborative effort to  
manage invasive  
species on a regional



Southern Illinois Invasive Species Strike Team  
2012 Annual Report



<http://www.rtrcwma.org/project/striketeam.html>

# Brown Barrens Nature Preserve



# Brown Barrens Nature Preserve

## Site Statistics

County: Union

Size: 28.8 acres

Ownership: IDNR

Days worked at site: 8

Man hours: 39

Acres chemically treated: 10.81



## Legend

- Sorghum halepense
- Securigera varia
- Microstegium vimineum
- Nature Preserve

## Chemical Treatment

### Species (common name)

*Microstegium vimineum* (Japanese stiltgrass)

*Lonicera maackii* (bush honeysuckle)

*Sorghum halepense* (johnsongrass)

*Securigera varia* (crown vetch)

### % Herbicide (Chemical Name)

1.5% Foast Plus (sethoxydim)

17% Element 4 (triclopyr)

2% Glyphos Xtra (glyphosate)

2% Glyphos Xtra (glyphosate)

### Method

Foliar

Basal bark

Foliar

Foliar

0 50 100  
Meters

Conservancy  
Protecting nature. Preserving life.

no guarantee or warranty concerning the accuracy of information contained in the geographic data.

# INTERAGENCY WORKDAYS



# VOLUNTEER WORKDAYS



# Illinois Stop The Spread!



Grab your shovel and let's start planting!



No experience necessary, drinks and lunch provided



# RESEARCH

- Boot brush efficacy
- Japanese chaff flower ecology and distribution (SIUC)
- Enhanced control of autumn olive, bush honeysuckle, and oriental bittersweet (Dow AgroSciences)



## OTHER CWMA PROJECTS/PROGRAMS

- New Invaders – (Northeast Illinois Invasive Plant Partnership)
  - Trains resource staff and volunteers to identify new invasive species
  - Provides cost share and equipment/herbicide stores in each county to be used for response to new finds
- Annual invasive species meetings – (Upper Peninsula CWMA)
  - Brings resource managers from across the region together for yearly updates, presentations on research and control techniques, and communication and planning sessions





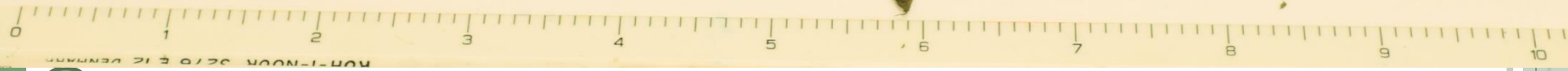
# SUMMARY

- Cooperative Weed Management Areas provide a formalized partnership to manage invasive species
- Need active partners
- Funding helps!
- Biggest benefits
  - Enhanced communication between individuals working on invasive species within region
  - Provides access to funding sources for invasive species work
  - Increase the priority of invasive species management within agencies
  - Vehicle to work across boundaries

## EXAMPLE FROM RIVER TO RIVER CWMA

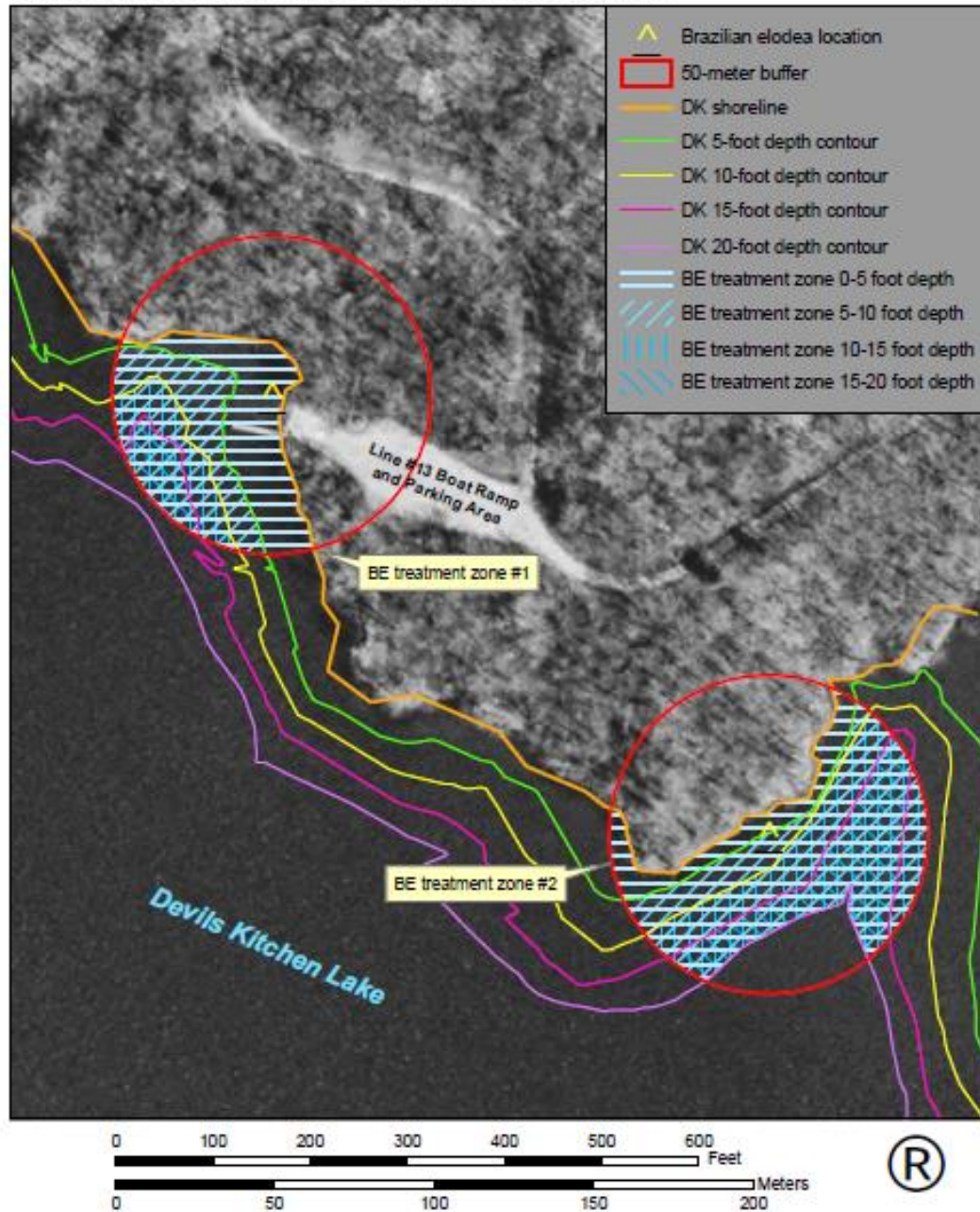
- Brazilian Elodea found by CWMA interns during survey project
- CWMA convened a meeting between all interested parties
- Plan formed
  - Additional surveys conducted
  - Treatment of known sites
  - Monitoring and retreatment
- Elodea now eradicated from site





NON-FLOOR 3278 E 12 DENKAR

BRAZILIAN ELODEA TREATMENT SITES IN DEVILS KITCHEN LAKE



# SUMMARY – KEYS TO SUCCESS

- Someone with energy willing to work to establish CWMA
- Get the right partners involved
- Choose the right projects for the region
- Provide venues and opportunities for communication and collaboration
- “Sell” your success and stories
- Keep invasive species and the CWMA in the news and on the radar screen



**THANK YOU!**

**QUESTIONS?**

