



Figure 1. Chinese privet growing in a conservation area in north Florida.

By J. P. Cuda and M. C. Zeller

Chinese or hedge privet, *Ligustrum sinense* (Oleaceae), is a semi-deciduous shrub or small tree of Asiatic origin that is commercially available from the nursery industry as an ornamental or border plant (PlantFinder 1999). After its introduction into the United States in 1852 (Dirr 1983), this woody shrub eventually escaped cultivation, and by 1932 had become naturalized across the southeastern United States (Small 1933). It is now considered an invasive weed in many areas of the Southeast (Dirr 1983, Nelson 1996).

In its introduced range, Chinese privet is a common component of the understory vegetation of forests in north Florida (Fig. 1), Alabama, Georgia (Godfrey 1988), Kentucky, North and South Carolina (Radford *et al.* 1968), Mississippi (Goddard 1992), Oklahoma (Taylor *et al.* 1996), Tennessee (Radford *et al.* 1968, Faulkner *et al.* 1989) and Texas (Correll and Johnston 1970). This woody shrub also is an invasive weed in Australia (Burrows and Kohen 1986) and Argentina (Montaldo 1993). While primarily a woody invader of abandoned or disturbed areas (Godfrey 1988), Chinese privet readily invades natural areas adjacent to disturbed sites, and is especially abundant along stream banks. The present distribution of naturalized populations of Chinese privet in Florida is shown in Fig. 2 (Wunderlin *et al.* 1995).

Chinese privet, *Ligustrum sinense*:

Prospects for Classical Biological Control in the Southeastern United States

Chinese privet can grow to a height of 10 m. The plant is characterized by its numerous leafy pubescent branchlets, and its small, simple, deciduous to semi-deciduous leaves are elliptic in shape (Fig. 3). The leaves are green (variegated in cultivation), opposite, have short pubescent petioles, and are attached at right angles to the stems. In bloom, the branchlets bear numerous, many-flowered panicles. Flowers (Fig. 3) are white and malodorous; the corolla tube is shorter than the spreading lobes, and the stamens are exerted. The fruits (Fig. 4) are blue, fleshy drupes that are ingested by birds (McRae 1980, Buchanan 1989, Montaldo 1993). New infestations probably develop from bird-dispersed seeds (Montaldo 1993).



Figure 3. Branchlet of Chinese privet with leaves and flowers.

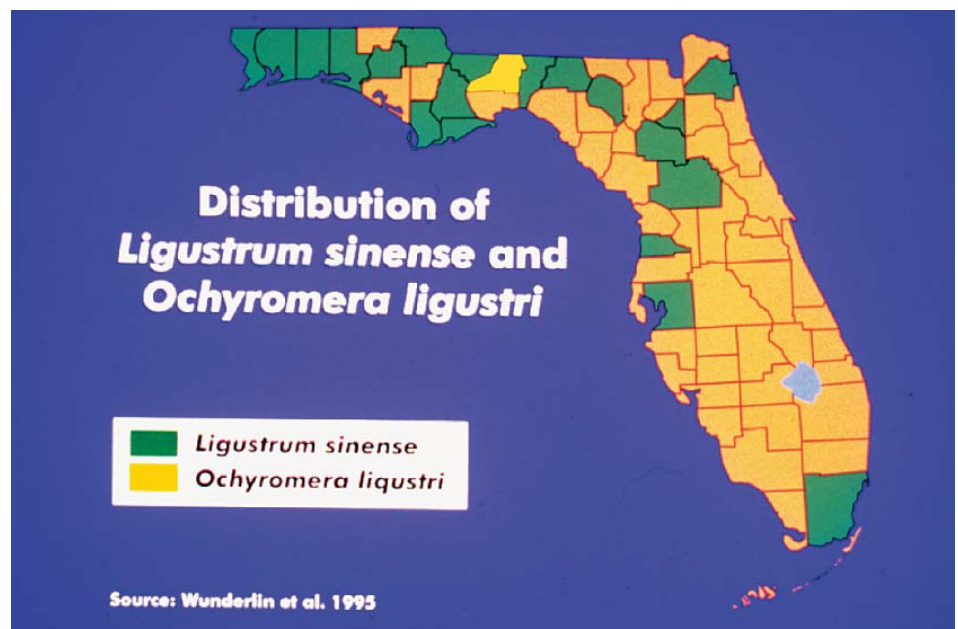


Figure 2. Current distribution of naturalized populations of Chinese privet and the ligustrum seed weevil *Ochyromera ligustri* in Florida. Adapted from Wunderlin *et al.* (1995).



Figure 4. Berry-like fruits of Chinese privet.

The Florida Exotic Pest Plant Council lists Chinese privet as a Category I invasive species (FLEPPC 1996). The shrub disrupts native plant communities in riparian and upland habitats by competing for the available light and space. The federal- and state-listed endangered Miccosukee gooseberry, *Ribes echinellum*, is on the verge of being displaced in Florida by encroaching stands of Chinese privet (Langeland and Burks 1998). Moreover, nutrient cycling in natural areas can be disrupted by the presence of Chinese privet. Faulkner *et al.* (1989) observed that dense thickets of Chinese privet in Tennessee produce large quantities of litter, and act like umbrellas by preventing the infiltration of leaf litter from the native tree canopy. Agriculture and public health also can be impacted by the presence of Chinese privet. Dense stands of this invasive shrub can serve as alternate host plants for the citrus whitefly, *Dialeurodes citri* (Hicks and Oliver 1987), and are conducive to infestations of the hard tick *Ixodes scapularis*, a suspected vector of Lyme disease in the southern United States (Goddard 1992).

Where it displaces native vegetation, Chinese privet may not have an adverse impact on wildlife populations because of its nutritional value. The plant serves as food source for the bobwhite quail, *Colinus virginianus*, and the white-tailed deer, *Odocoileus virginianus*, when more desirable forage plants are scarce (McRae 1980, Stromeyer *et al.* 1998a,b).

From a management perspective, mechanical control methods such as

cutting and prescribed burning are ineffective against Chinese privet (Faulkner *et al.* 1989). The plant resprouts rapidly from the cut stumps, and its affinity for low-lying damp areas does not allow fire to carry well. The moist conditions in the bottom litter layer also reduce the effectiveness of the fire by not allowing temperatures to become hot enough to kill the root crowns. Although the herbicide glyphosate will severely damage or kill Chinese privet, chemical control is impractical and too expensive for large areas with dense growth (Faulkner *et al.* 1989). Since conventional methods are inappropriate for selectively controlling large infestations of Chinese privet in natural areas, biological control with natural enemies from the plant's native range should be considered.

Chinese privet would be a good candidate for classical biological control because the environmental risks associated with the importation and release of host specific natural enemies would be low. There are no native congeners in the genus *Ligustrum* occurring in the United States (Pemberton 1996). Therefore, the level of host specificity required for candidate natural enemies may be quite broad yet still not pose a risk to non-target native or economically important plant species. The nursery industry would probably object to the introduction of insects that feed on the foliage or girdle the branches or stems of Chinese privet and would be fearful of attacks on the widely used *Ligustrum japonicum* (Japanese privet) and the also popular *L. lucidum* (wax privet). This conflict of

interest could be resolved by selecting only those insects that attack the plant's flowers or seeds. According to Harley (1986), suppression of reproduction is important for controlling woody weeds (a) that reproduce by seed; (b) where existing plantings provide some benefit, e.g., ornamental value; and (c) when herbicide applications provide only temporary control and retreatment is uneconomical or environmentally disruptive. Chinese privet meets all of these criteria.

Biological control of Chinese privet already maybe occurring in some areas, although not as a result of any purposeful introductions. The seed weevil *Ochyromera ligustri* was recently found attacking Chinese privet in Leon County, Florida (Fig. 2) (Cuda and Zeller 1998). This immigrant natural enemy of *Ligustrum* spp. maybe capable of reducing the spread of Chinese privet into new areas and/or the densities of existing stands. However, field and laboratory studies will be required to determine to what extent this insect can control the growth and spread of Chinese privet populations in natural areas.

Ochyromera ligustri was first discovered in 1959 on Japanese privet, *L. japonicum*, in Wake County, North Carolina (Warner 1961, Wray 1961), and is believed to have immigrated from the Orient in nursery stock imported into the United States. Since then, the weevil has been found in Florida, Georgia, North and South Carolina, and Virginia, as well as North and South Dakota (O'Brien and Wibmer 1982, Johnson and Lyon 1988). Considering that Leon County is the only locality in Florida where Japanese privet (the principal host plant for *O.*



Figure 5. Ligustrum seed weevil *Ochyromera ligustri*, an insect natural enemy of Chinese privet.

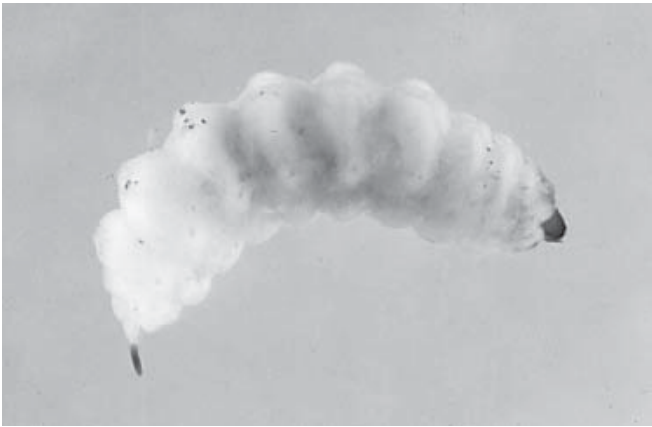


Figure 6. Mature larva of the ligustrum seed weevil *O. ligustri*.

ligustri) is documented as naturalized (Wunderlin et al. 1995), it is not surprising that the weevil has adapted to Chinese privet in this region of north Florida where the two species of *Ligustrum* have overlapping distributions. The weevil also has been collected from wax-leaf ligustrum, *L. lucidum*, common privet, *L. amurense*, lilac, *Syringa* spp., and grape, *Vitis* spp., in North Carolina (Warner 1961, Wray 1961). However, it is not clear from the literature whether lilac or grape are legitimate host plants in that they are capable of supporting complete development of the weevil.

The biology of *O. ligustri* on Japanese privet was reviewed by Johnson and Lyon (1988). The weevil is 3-5 mm long and is shiny brown with golden yellow hair like scales (Fig. 5). The adults feed on the foliage by making small perforations in the interior of the leaf blade, and drop to the ground when disturbed. In North Carolina, adults are active from late June to early July. Females deposit their eggs in the seed or in the mature fleshy fruits. The larvae (Fig. 6) feed inside the fruits and destroy the seeds as they complete their development to the adult stage. New adults emerge from the seeds (one weevil per seed) in mid-May, and there is only one generation per year.

We thank M. C. Thomas for identifying the insect, J. F. Butler and K. C. Burks for the photographs of the insect and plant, respectively, and J.H. Frank and N.C. Coile for reviewing the manuscript. Florida Agricultural Experiment Station Journal Series No. N-01574.

Jim Cuda is an Assistant Professor in the Entomology and Nematology Depart-

ment, University of Florida, P.O. Box 110620, Gainesville, Florida 32611-0620

Mark Zeller is a Biologist in the Bureau of Invasive Plant Management, Florida Department of Environmental Protection, 3917 Commonwealth Boulevard, M.S. 710, Tallahassee, Florida 32399-3000

References

- Buchanan, R. A. 1989. Pied currawongs (*Strepera graculina*): Their diet and role in weed dispersal in suburban Sydney, New South Wales (Australia). Proceedings of the Linnaean Society of New South Wales 111: 241-256.
- Burrows, E. J., and J. Kohen. 1986. Inhibition of germination in privet. Plant Protection Qtrly 1: 107-108.
- Correll, D. S., and M. C. Johnston. 1970. Manual of the vascular plants of Texas. Texas Research Foundation, Renner, Texas. 1881 PP.
- Cuda, J. R., and M. C. Zeller. 1998. First record of *Ochyromera ligustri* (Coleoptera: Curculionidae) from Chinese privet in Florida. Florida Entomologist 81: 582-584.
- Dirr, M.A. 1983. Manual of woody landscape plants, 3rd ed. Stipes Publishing Co., Champaign, IL. 536 pp.
- Faulkner, J. L., E. E. C. Clebsch, and W. L. Sanders. 1989. Use of prescribed burning for managing natural and historic resources in Chickamauga and Chattahoochee National Military Park, USA. Environmental Management 13: 603-612.
- Florida EPPC. 1996. Florida Exotic Pest Plant Council occurrence database. URL: <http://www.fleppc.org/>.
- Goddard, J. 1992. Ecological studies of adult *Ixodes scapularis* in central Mississippi: questing activity in relation to time of year, vegetation type, and meteorologic conditions. Journal of Medical Entomology 29: 501-506.
- Godfrey, R. K. 1988. Trees, shrubs and woody vines of northern Florida and adjacent Georgia and Alabama. University of Georgia Press, Athens. 734 pp.
- Harley, K. L. S. 1986. Suppression of reproduction of woody weeds using insects which destroy flowers or seeds, pp. 749-756. In Delfosse, E.S. (ed.), Proceedings of the VI International Symposium on Biological Control of Weeds, 19-25 August 1984, Vancouver, Canada. Agriculture Canada.
- Hicks, C. B., and A. D. Oliver. 1987. Citrus whitefly preference among four ornamental host plants. Hortscience 22: 59-60.
- Johnson, W. T., and H. H. Lyon. 1988. Insects that feed on trees and shrubs, 2nd ed. Cornell University Press, Ithaca. 556 pp.
- Langeland, K. A., and K. C. Burks. 1998. Identification and biology of non-native plants in Florida's natural areas. University of Florida, Gainesville. 165 pp.
- McCrae, W. A. 1980. Unusual bobwhite foods on abandoned Piedmont farmlands, Georgia, USA. Georgia Journal of Science 38: 49-54.
- Montaldo, N. H. 1993. Avian dispersal and reproductive success of two species of *Ligustrum* (Oleaceae) in a forest relict in Argentina. Revista Chilena de Historia Natural 66: 75-85.
- Nelson, G. 1996. The shrubs and woody vines of Florida. Pineapple Press, Sarasota. 391 pp.
- O'Brien, C. W., and G. J. Wibmer. 1982. Annotated checklist of the weevils (Curculionidae *sensu lato*) of North America, Central America, and West Indies (Coleoptera: Curculionidae). Memoirs of the American Entomological Institute 34: 116.
- Pemberton, R. W. 1996. The potential of biological control for the suppression of invasive weeds of southern environments. Castanea 61: 313-319.
- PlantFinder. 1999. PlantFinderwholesaleguide to foliage and ornamental plants, October, p. 165.
- Radford, A. E., H. E. Ahles, and C. R. Bell. 1968. Manual of the vascular flora of the Carolinas. University of North Carolina Press, Chapel Hill. 1183 pp.
- Small, J. K. 1933. Manual of the southeastern flora, part one and two. University of North Carolina Press, Chapel Hill. 1554 pp. (facsimile reprint 1972, Hafner Publishing, New York.).
- Stromayer, K. A. K., R. J. Warren, and T. B. Harrington. 1998b. Managing Chinese privet for white-tailed deer. Southern Journal of Applied Forestry 22: 227-230.
- Stromayer, K. A. K., R. J. Warren, A. S. Johnson, R. E. Hale, C. L. Rogers, and C. L. Tucker. 1998a. Chinese privet and the feeding ecology of white-tailed deer: The role of an exotic plant. Journal of Wildlife Management 62: 1321-1329.
- Taylor, E. S., L. K. Magrath, R. Folley, R. Buck, and S. Carpenter. 1996. Oklahoma vascular plants: Additions and distributional comments. Proceedings of the Oklahoma Academy of Sciences 76: 31-34.
- Warner, R. E. 1961. The genus *Ochyromera* new to the western hemisphere, with a new species and additions to the Junk-Schenckling Coleopterorum Catalogus (Curculionidae: Prionomerinae, Endaeini). Coleopterists' Bulletin 15: 121-124.
- Wray, D. L. 1961. Biology and life history of the ligustrum weevil (Curculionidae). Coleopterists' Bulletin 15: 119-120.
- Wunderlin, R. R., B. F. Hansen, and E. L. Bridges. 1995 (updated Dec 1998). Atlas of Florida vascular plants. University of South Florida, Institute for Systematic Botany. URL: <http://www.usf.edu/~isb/projects/atlas/maps/ligusine.gif> & [ligujapo.gif](http://www.usf.edu/~isb/projects/atlas/maps/ligujapo.gif).